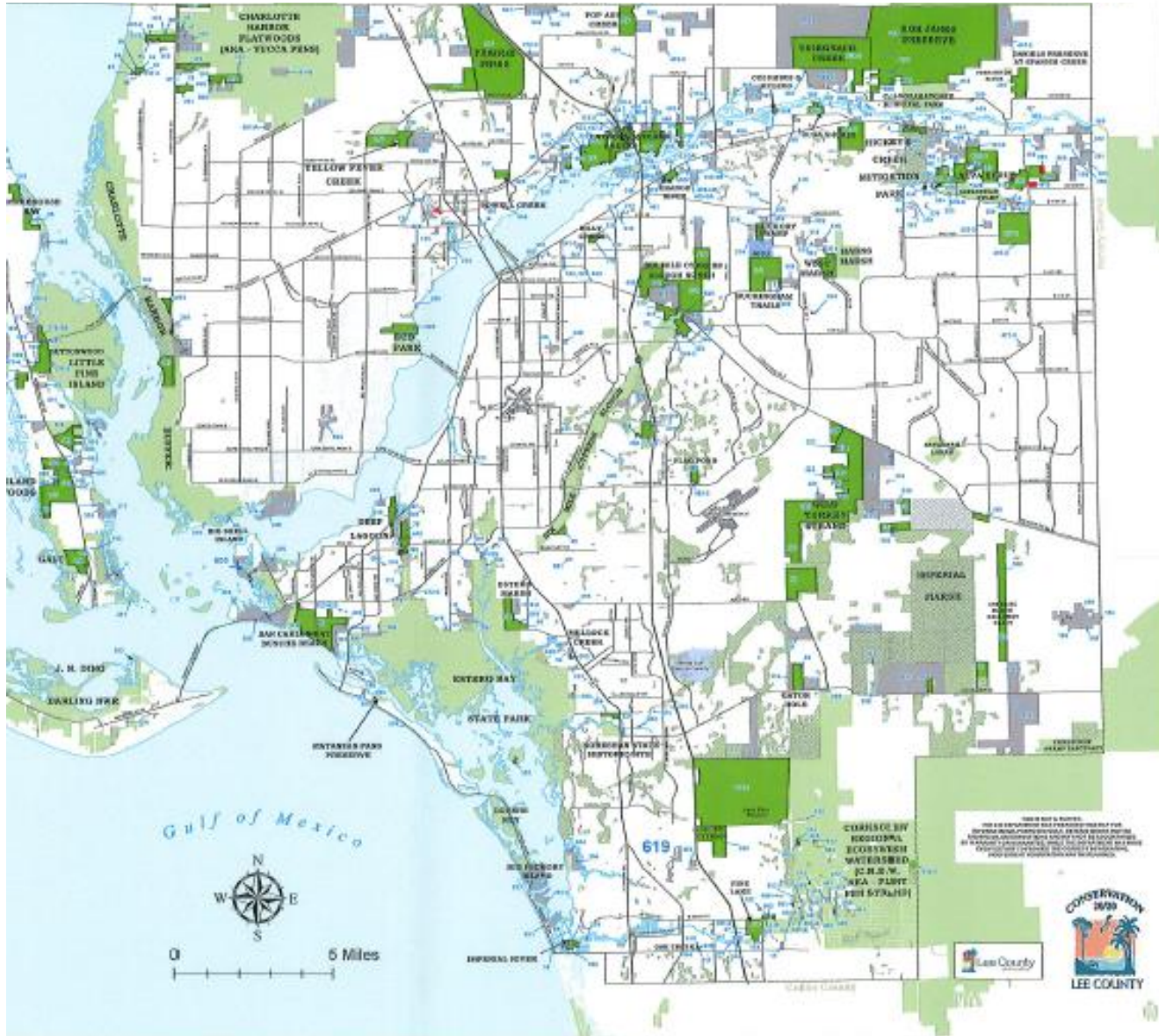


LEE COUNTY CONSERVATION 2020 LANDS (DARK GREEN), WITHDRAWALS (GREY)

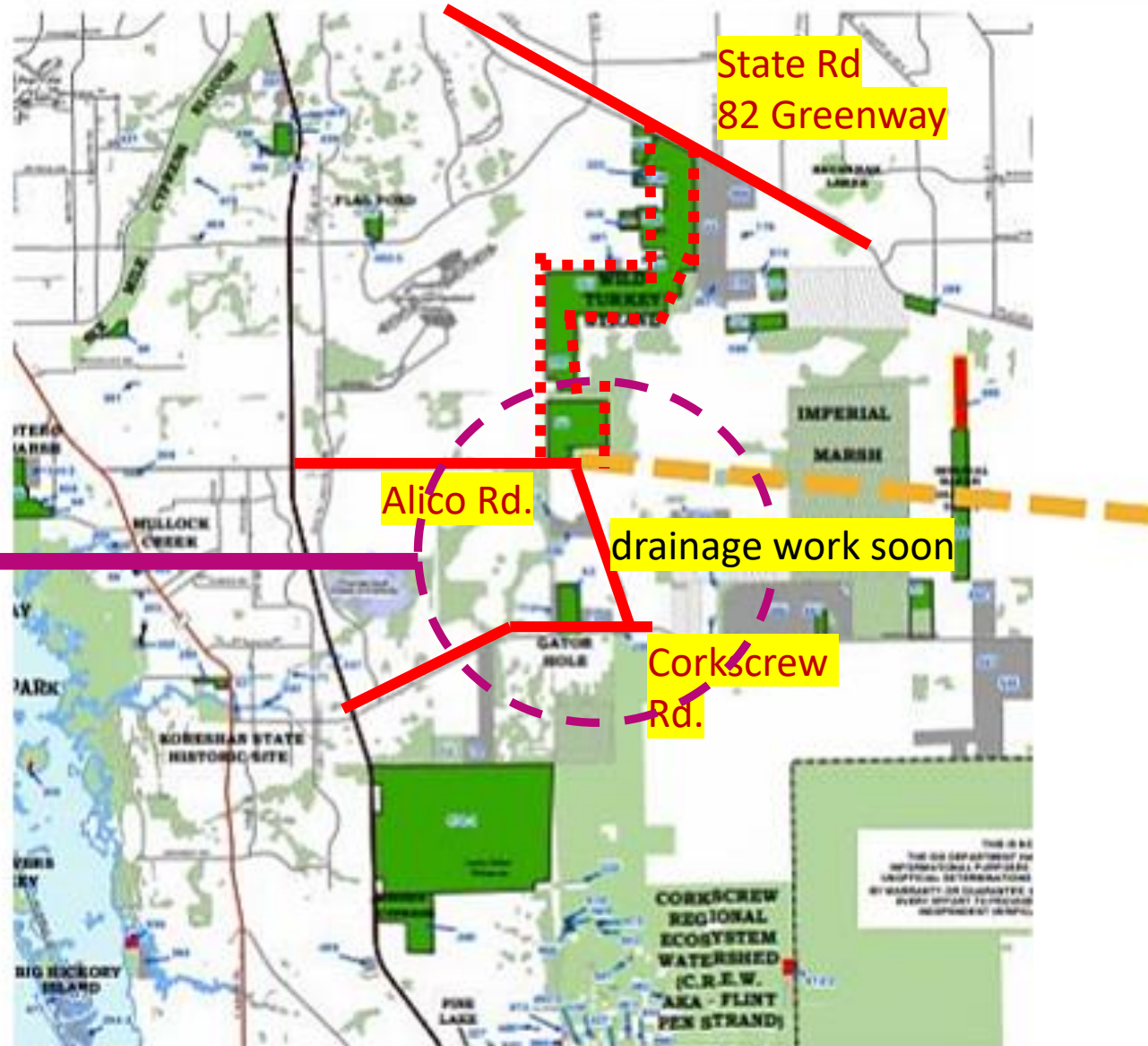




MPO Board Meeting: May 19, 2023

POSSIBLE SHARED USE/ MULTI USE PATH thru CURRENTLY COUNTY OWNED CONSERVATION 2020 WILD TURKEY STRAND/GREENWAY CONNECTION

Possible connections from Corkscrew Rd. to Alico could be 1) serve or thru Wild Blue, 2) thru Gator Hole, Conservation easement Youngquist & onto Devore with additional easement or serve this residential community 3) along Alico after the Alico bend as part of enhanced drainage work soon to commence as part of Alico Rd. improvements.



Potential for shared-use path for hiking, biking perhaps even equestrian use at public access point on Alico Rd. in the University Community. Path could be along the western perimeter of Conservation 2020 lands along the >3000 acres of Wild Turkey and loop back around from SR 82 for Alico Connector or along the eastern edge of Wild Turkey perimeter of along Alico Connector from planned Sunshine Blvd. connect.



Alico North-South Conveyance Capacity Improvements

Lee County is currently designing and permitting proposed ditch improvements to the North-South portion of Alico to allow for increased outfall capacity for the eastern slough in large rainfall events. These improvements are intended to be constructed in conjunction with the Ph 1 roadway improvements.



D10

Conservation 2020 Access & Management NOT brought before CLASAC

documents alicoroadextension.com



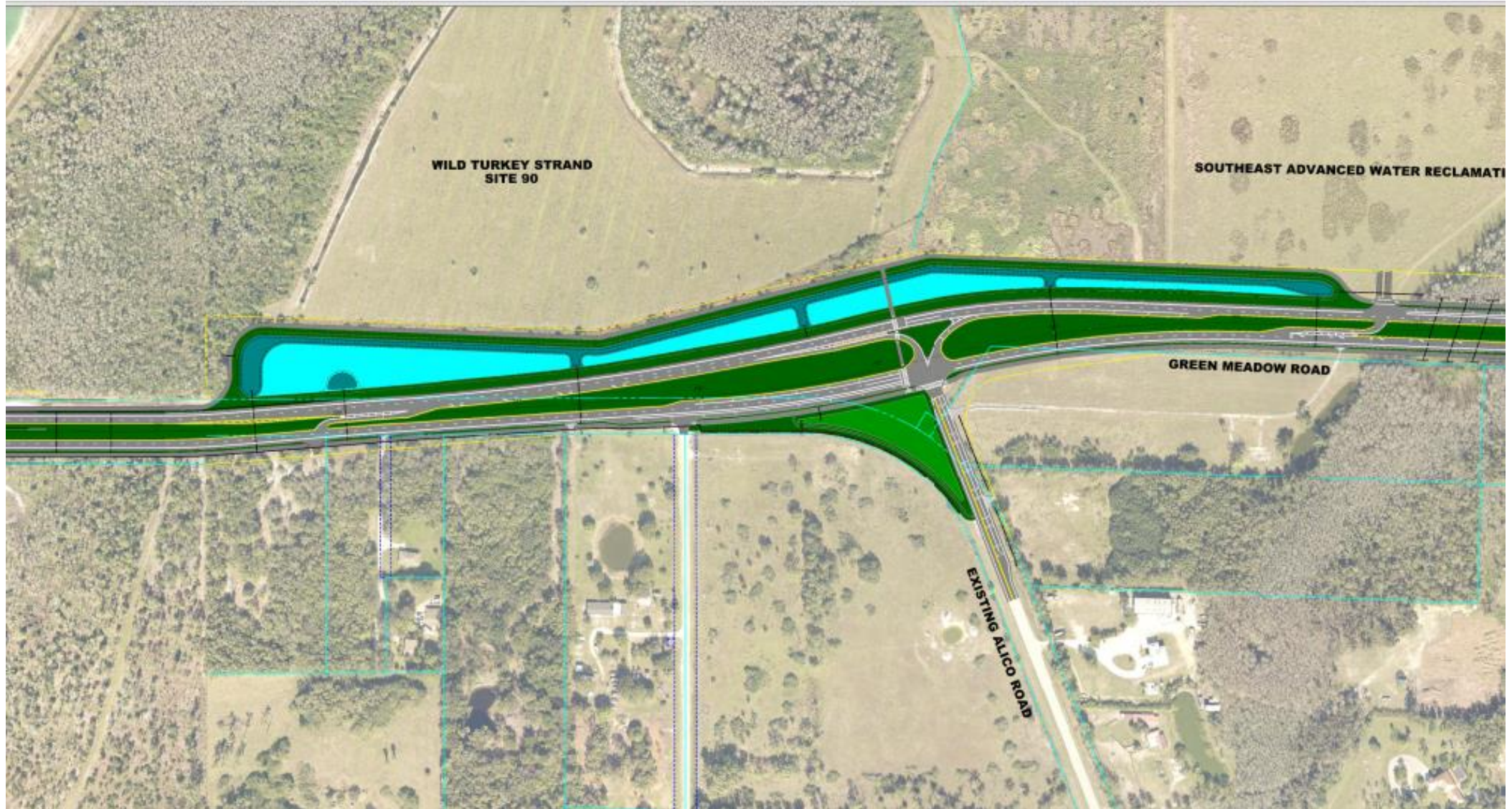
D4

Wild Turkey Strand Site 90

Hydrologic Improvements As part of the overall environmental restoration the old farm field ditches and berms are being removed and the ground returned to historic elevations. Additional wetland areas are also being created within the farm field area. This restores the natural sheetflow conditions of the land while also providing additional stormwater storage during large rainfall events.

Alico Rd-Conservation 2020 Wild Turkey Strand Frontage- University Community

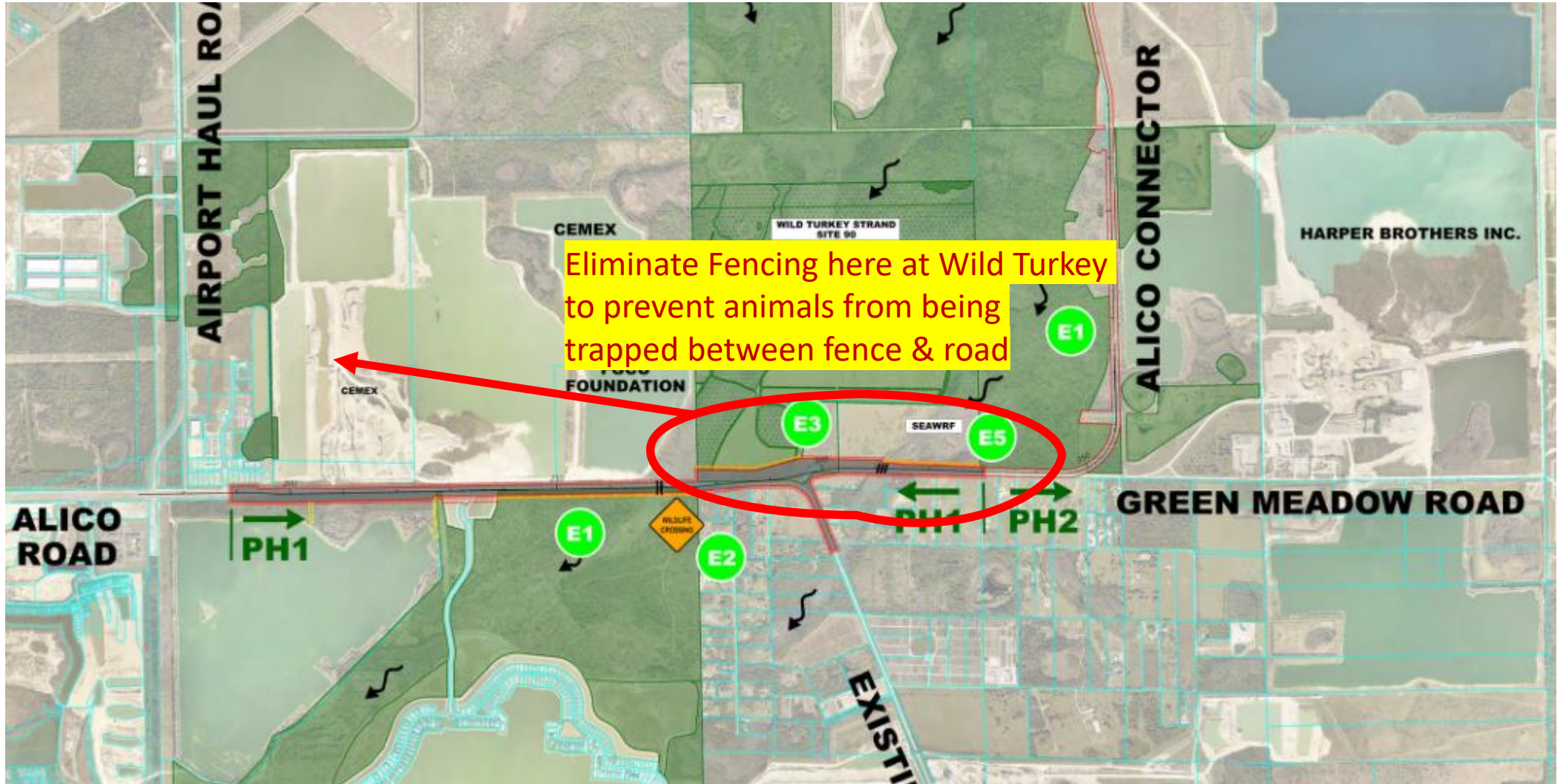
documents alicoroadextension.com



GREEN MEADOW INTERSECTION



Alico Phase 1/Extension Environmental documents alicroadextension.com





Florida Fish and Wildlife Conservation Commission

[Home](#) › [Wildlife & Habitats](#) › [Wildlife Conservation](#) › [Florida Panther Program](#) › [Panther Pulse](#)

Panther Pulse

26	10/30/2021	UCFP413	4 mo	F	Vehicle	Lee	Corkscrew Rd 700m West of Alico Rd
----	------------	---------	------	---	---------	-----	------------------------------------



E1

Wildlife Fencing

A majority of the alignment will be outfitted with a 10' high wildlife fence to help channel wildlife to the safe crossing locations, thereby reducing wildlife-vehicle collisions.

*not in areas where animals can become trapped between road & fence



E2

Primary Wildlife Crossing

Phase I improvements include a dual-span bridge with 5' wide shelves installed at 1' above the control elevation on each side to serve as a wildlife crossing at the western slough. This is a known hot spot of wildlife traffic and will reduce wildlife-vehicle collisions. Phase 1 improvements will also include a weir-controlled pipe outfall to serve as an emergency overflow into the large County pond west of WildBlue. Should the western slough exceed predetermined flood stages, additional volume can be transferred and stored in the County pond.

*need an additional one on Green Meadow to service Corkscrew Rd., E of Alico crossing



E7

Existing Wildlife Crossing

An existing bridge-type wildlife crossing is in place underneath Corkscrew Road, just east of the Alico Road intersection. This is a well-used crossing linking natural areas north and south of Corkscrew Road through the Lee County-owned well field.

*need an additional large crossing on Green Meadow to service Corkscrew Rd., E of Alico crossing

Public Meeting critique:

Thank you for joining us tonight to review the preliminary design of the Alico Road Extension. This meeting specifically covers Phase 1 of the design which includes existing Alico Road from Airport Haul Road to Green Meadow Road (see map). A public meeting will be held later this year to discuss Phases 2 and 3, when more information is available for those segments.

Public Meeting had too much information, some of which was inaccurate or misleading and prevented focus on Phase 1 or reflection about Alico-Ben Hill Griffin intersection.



SAFETY CONCERNS

- **Merging heavy trucks**
- **No on-site queuing**
- **No on site counting of trucks**
- **Dust & debris**
- **Incompatible uses: mining, commercial, commuter, residential**
- **Is turn length evidence based for number of trucks waiting in morning or surveyed turning (TIS)? No known definitive data.**
- **Cemex buffer function, reflect plan?**

Cemex Mine Extension DCI2021-00009

Memorandum Traffic Elements Proposed Deviation Review

From:

M. Evans *M.E.*
Senior Engineer

Lee County
Department of Community Development
MEMORANDUM

To: Director
From: M. Evans
Subject: CEMEX Mine Extension Traffic Elements Proposed Deviation Review

Lee County
Department of Community Development
MEMORANDUM

Lee County
Department of Community Development
MEMORANDUM

Lee County
Department of Community Development
MEMORANDUM

Lee County
Department of Community Development
MEMORANDUM

Lee County
Department of Community Development
MEMORANDUM

Deviations 4-A

Deviation 4-A requests relief from LDC, Section 12-116(b)(2), which requires the construction of infrastructure, including permanent count stations, to monitor daily vehicular trips accessing the mine site.

“Since the intent of the subject project is to combine all phases of the existing proposed mining operations under a single approval, the applicant should be required to meet the requirement of this portion of the LDC.” *(underlined for emphasis by engineer reviewing deviations)*

- “determine adequacies of Alico road turn lanes”
- Increase compatibility of ongoing mine activity with the surroundings”
- “aid law enforcement”
- “promote and protect public safety and welfare”

- “land uses in proximity to the mine site have greatly changed”
- DOT comment: “The blending of dump trucks and local trips may create congesting and operational inefficiencies within the roadway network.”

Deviation 5-A

Deviation 5-A requests relief from LDC, Section 12-116(c), which requires continuous truck hauling monitoring and enforcement, developing and enforcing a truck hauling operation plan, and maintaining, repairing, and replacing the site access within county-maintained road right-of-way.

“To request a deviation from this LDC requirement may be viewed as unreasonable, since this code provision specifically relates to public safety.”

- “HVCs require longer acceleration and braking distances”
- “code provision assigns responsibility to maintain, repair, and replace infrastructure that primarily benefits the mine operator to said operator”

“The Lee County taxpayer should not in any way be responsible for costs associated with the mine operator’s site-related improvements.”

Deviation 14-D

Deviation 14-D requests relief from LDC, Section 12-116(b)(1), which requires left- and right-turn lanes at the mine access along Alico Road.

- “turn lanes are required to protect public safety and welfare”

“However, with recent land use changes in proximity ... increase to traffic volumes due to recent rapid residential and mixed-use planned development growth along the Alico Road and Corkscrew Road ... the need for a westbound Alico Road right-turn lane at the site access is likely of even greater importance to promote and protect public safety and welfare.”



**REQUEST FOR
SUBMITTAL REQUIREMENT WAIVER
FOR UNINCORPORATED AREAS ONLY**

Upon written request, the Director may modify the submittal requirements for Public Hearings, Development Orders, Limited Review Development Orders and other Administrative Action Applications where it can be clearly demonstrated that the submission will have no bearing on the review and processing of the application. The request and the Director's written response must accompany the application submitted and will become a part of the permanent file.

**APPLICATION FOR WAIVER OF REQUIRED SUBMITTAL ITEMS
(indicate the appropriate application type)**

- Public Hearing - General Requirements (34-202)
- Public Hearing - Mining Excavation Planned Development (12-110)

Excerpt from Submittal Requirement Waiver Attachment

3A facility are required to accommodate the processing of material from Phase 3D and none will be requested by reason of this application. **Based on the forgoing, a waiver is requested from the requirements of LDC Sec. 12-110(a)(7).**

LAS-20-04, HEA DECISION 893-91-28-EAV-04, SEZ2007-00006, and Z-13-026, and under approved development orders LDO960509, LDO2003-00414, DOS2004-00334, LDO2007-00214, LDO2015-000659, and DOS2015-00078. Waivers are requested from the following submittal requirements:

1. From LDC Section 12-110(a)(7) Transportation Impact Statement (TIS). The proposed extension of the CEMEX Alico North Quarry (Phase 3D) will not result in additional or new traffic impacts beyond those previously reviewed and approved in connection with the excavation authorized for Phases 3A, 3B and 3C and memorialized in existing Permits as listed above. All excavated material from Phase 3D will be processed at the existing material processing facility located in Phase 3A. No modifications to the Phase 3A facility are required to accommodate the processing of material from Phase 3D and none will be requested by reason of this application. **Based on the forgoing, a waiver is requested from the requirements of LDC Sec. 12-110(a)(7).**

A. SPECIFIC SECTION(S) AND REQUIREMENT(S) FOR WHICH A WAIVER IS SOUGHT:

#	Section Number	Requirement
#1	12-110(a)(7)	TIS
#2	12-110(a)(21) - a, b, c, k.	Environmental Assessment Report
#3	12-110(a)(17)	Historical and Archaeological Data
#4	12-110(a)(18)	Test Boring Data
#5	34-202(a)(10)	Potable Water & Central Sewer
#6		
#7		
#8		

DEVIATION 15: GRANTED seeks relief from requirement LDC Section 10 -291(3) Access: requiring industrial development greater than **10 acres** to have more than 1 ingress or egress. This property is over **1,000 acres**.

DEVIATION 5: GRANTED seeks relief from LDC 12-116 (c) Transportation Impact Mitigation: requiring mine operator to **contract with law enforcement to provide continuous monitoring** of truck traffic, develop **hauling plan**, maintain, repair, replace **access within off-site specific improvement** and provide certain information (or) to **establish a user fee**, to not provide these services.

DEVIATION 4: GRANTED seeks relief from LDC 12-116(b)(2) Permanent Count Stations: requiring paved, channelized access from 200' inside up to public road and permanent count station to monitor daily vehicle trips, warranty of repairs, maintenance, replacement and payment of fees.