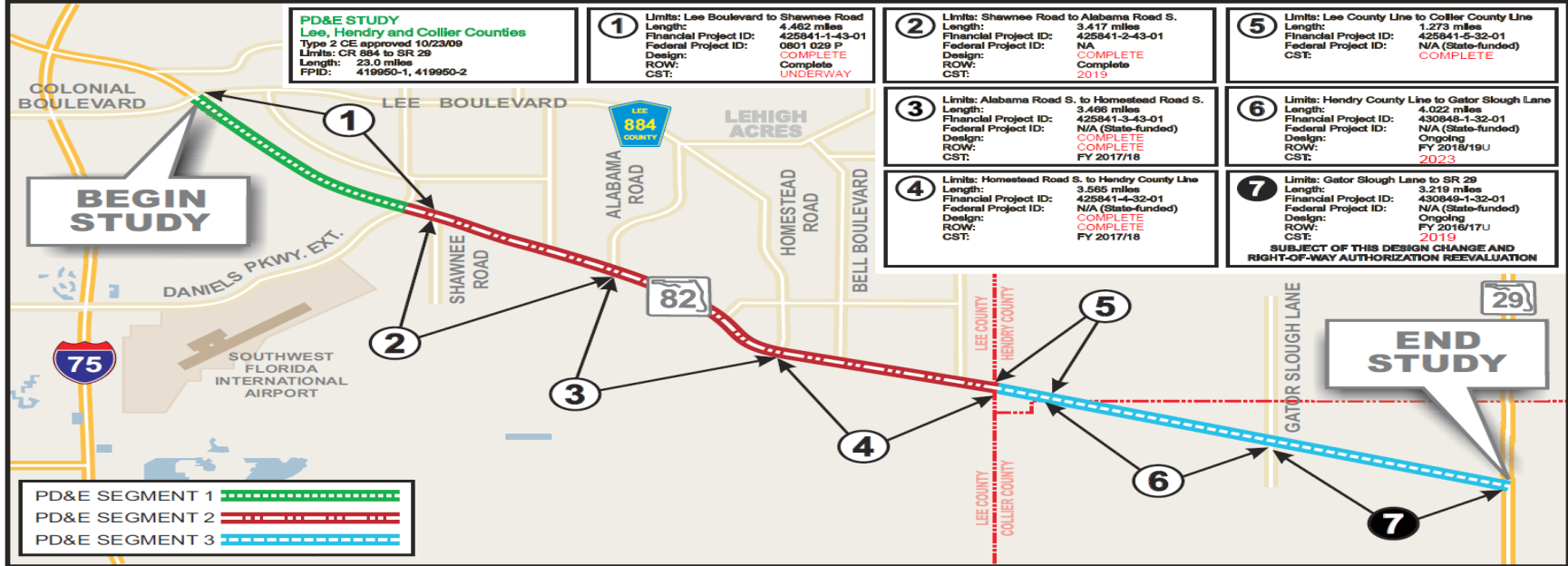




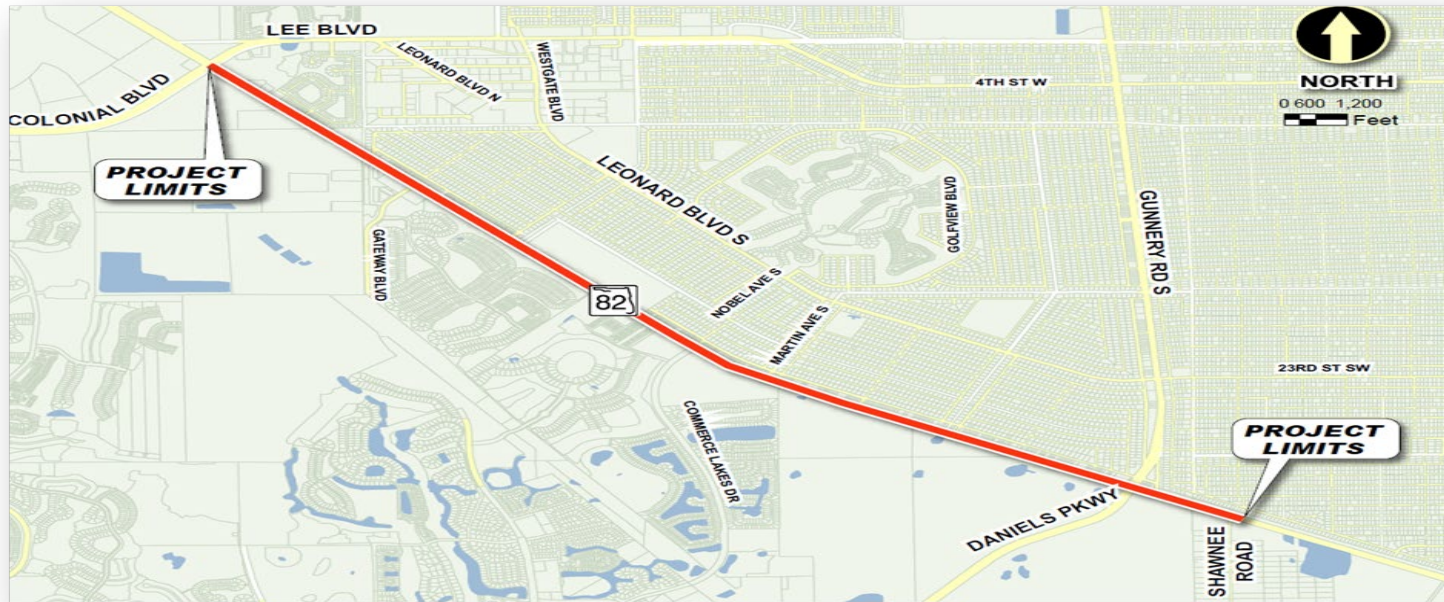
SR 82 Corridor from CR 884 (Lee Blvd.) to SR 29

District One

Lee, Hendry and Collier Counties



- **Approx. 23 Miles Total Encompassing 3 Counties**
- **Divided into 7 Segments for Design**
 - **Lee County - First 4 Segments from Lee Blvd. to Lee/Hendry C/L**
 - **Hendry County - Segment 5 from Lee/Hendry C/L to Hendry/Collier C/L**
 - **Collier County – Segments 6 & 7 from Hendry/Collier C/L to SR 29**



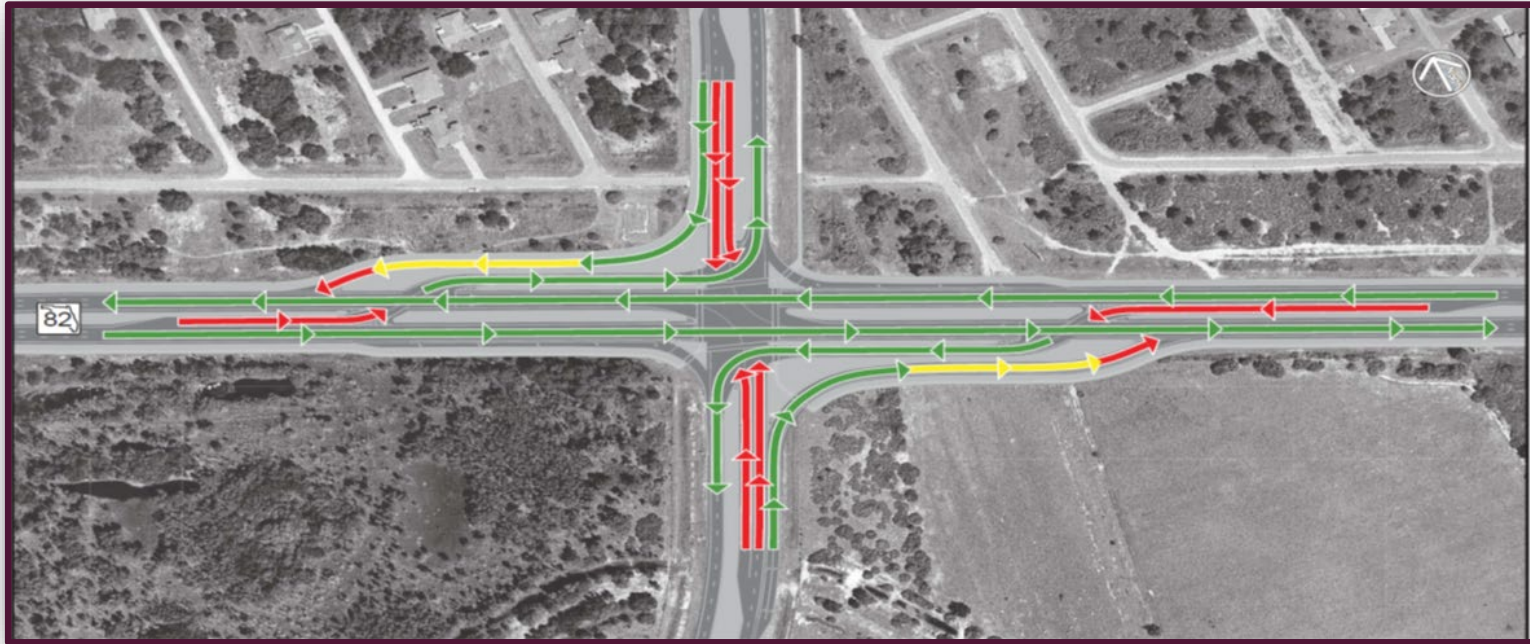
❖ **Segment 1; 425841-1; from Colonial/Lee Blvd to Shawnee Rd.; 4.5 Miles**

- Longest and Most Diverse of all the 7 Segments
- 4.5 Miles of Reconstruction – 2-lane Undivided to 6-lane Divided
- Multiple Components – Continuous Flow Intersection (CFI), Concrete Pavement, Local Municipality Partnering (LAMSID Borrow Pit), Noise Wall, Concrete Sidewalks, Signing & Pavement Markings, Lighting, Signalization, FAA Coordination for local airport(s)
- **Construction Completed in December 2019**



❖ Segment 1 Typical Section

- Three 12-ft travel lanes in each direction
- 6.5-ft buffered bike lane/paved shoulder in each direction
- 5-ft concrete sidewalk on the north side of SR 82
- 8-ft concrete sidewalk on the south side of SR 82
- Type E Curb & Gutter along inside and outside
- Posted Speed = 55 MPH



❖ Continuous Flow Intersection (CFI)

- First CFI in State of Florida
- Promotes capacity and flow for the predominantly heavy left-turn movements from SR 82 onto Daniels Pkwy./Gunnery Rd.
- **Link to YouTube Video of CFI:** <https://www.youtube.com/watch?v=6B2NeuXA4IY>



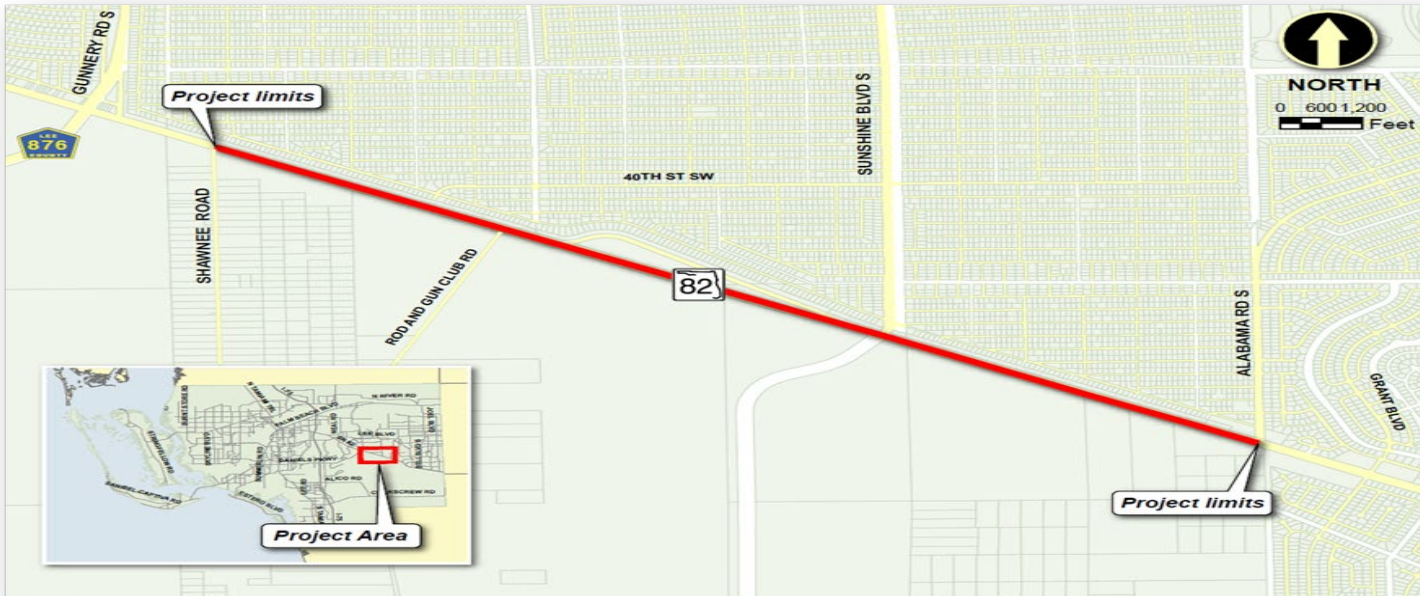
❖ Continuous Flow Intersection (CFI)

- Extensive Concrete Pavement Area
- Intense Maintenance of Traffic During Construction of the Intersection
- Ribbon Cutting Ceremony to Mark the Official Opening of the CFI held on July 9, 2019.
- Construction Completed October 2019



❖ **Partnership with Lehigh Acres Municipal Services District (LAMSID)**

- FDOT collaborated with LAMSID to expand their West Harns Marsh Preserve
- Provided Tremendous Water Quality Benefits for LAMSID
- Provided in Excess of 500k Cubic Yards of needed Embankment for SR 82
- A Component Borrow Pit Plans Set was Incorporated for this Operation



❖ **Segment 2; 425841-2; from Shawnee Rd. to Alabama Rd.; 3.4 Miles**

- Extensive Unsuitable Soil (Muck) Near Western Project Limit
- 3.4 Miles of Reconstruction – 2-lane Undivided to 6-lane Divided
- Multiple Components – Local Municipality Partnering (LAMSID Borrow Pit), Concrete Sidewalk, 10-ft Asphalt Shared Use Path (along southside), Signing & Pavement Markings, Lighting, Signalization, FAA Coordination for Local Airport(s)
- **Construction Completed in October 2020**



❖ Segment 2 Typical Section

- Three 12-ft travel lanes in each direction
- 6.5-ft buffered bike lane/paved shoulder in each direction
- 5-ft concrete sidewalk on the north side of SR 82
- 10-ft asphalt Shared Use Path (SUP) on the south side of SR 82
- Type E Curb & Gutter along inside and outside
- Posted Speed = 55 MPH

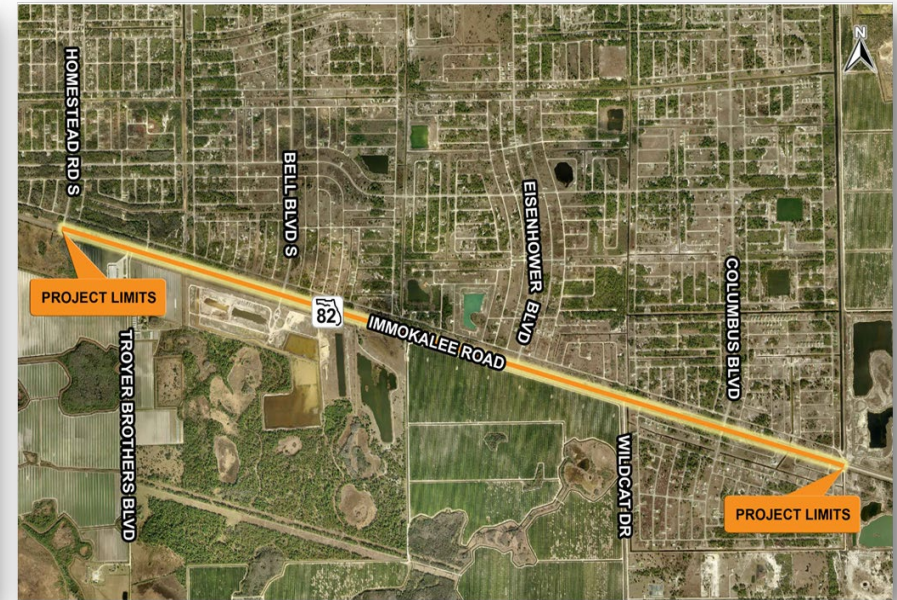


❖ **Unsuitable Soil (Muck)**

- **Extensive Muck (too deep to remove) Forced Creative Surcharge Mitigation**
- **Mitigation to the Muck Area in Segment 2 was handled in the Segment 1 Plans and Construction**
- **Segment 2 was Let to Construction ASAP once Muck Surcharge Mitigation was Completed in Segment 1 Construction (about one year – faster than anticipated)**



- ❖ **Continued Partnership with Lehigh Acres Municipal Services District (LAMSID)**
 - **FDOT collaborated with LAMSID to expand their West Harns Marsh Preserve**
 - **Provided Tremendous Water Quality Benefits for LAMSID**
 - **Provided in Excess of 500k Cubic Yards of needed Embankment for SR 82**
 - **A Component Borrow Pit Plans Set was Incorporated for this Operation**



❖ **Segment 3; 425841-3; from Alabama Rd. to Homestead Rd.; 3.5 Miles**

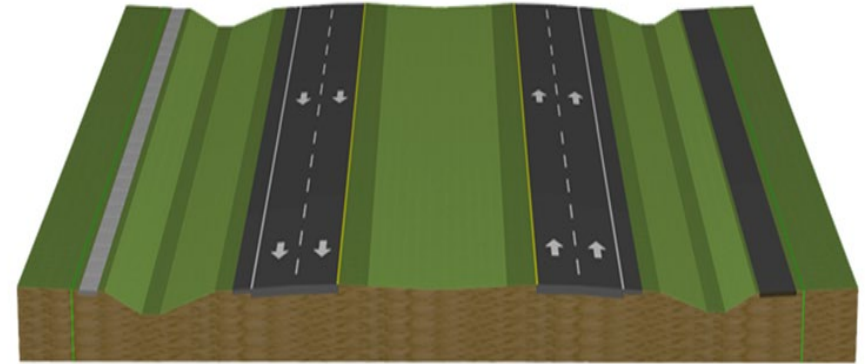
❖ **Segment 4; 425841-4; from Homestead Rd. to Hendry C/L; 3.6 Miles**

- Combined into One Construction Contract **Segment 3 & 4 completed in June 2021**
- 7.1 Miles of Reconstruction – 2-lane Undivided to 4-lane Divided (expandable to 6)
- Multiple Components – Local Municipality Partnering (LAMSID Canal), Concrete Sidewalk, 10-ft Asphalt Shared Use Path (along southside), Signing & Pavement Markings, Lighting, Signalization, FAA Coordination for Local Airport(s)



❖ **Segment 3 Suburban Typical Section**

Posted Speed = 55 MPH



❖ **Segment 4 Rural Typical Section**

Posted Speed = 60 MPH

- Two 12-ft travel lanes in each direction
- Paved shoulders in each direction
- 5-ft sidewalk on the north side
- 10-ft SUP on the south side
- Both Expandable to Six Lanes in the Future





- ❖ **Further Partnership with Lehigh Acres Municipal Services District (LAMSID)**
 - **FDOT Teamed Up Again with LAMSID to Expand the Hendry Canal**
 - **Provided Tremendous Water Capacity Benefits for LAMSID**
 - **Provided Much Needed Embankment for SR 82**
 - **A Component Canal Plan Set was Incorporated for this Operation**

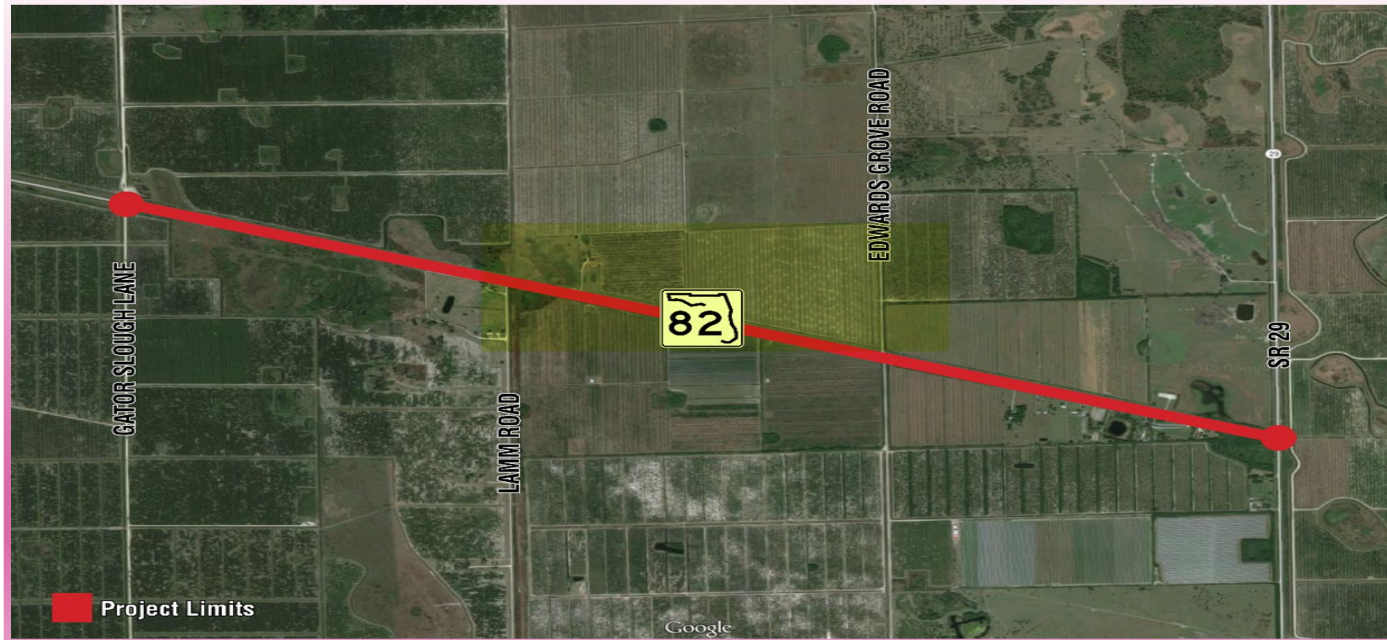


❖ **Segment 5; 425841-5; from Lee/Hendry C/L to Hendry/Collier C/L; 1.3 Miles**

- Construction Completed in Fall of 2016 (first segment constructed)
- 1.3 Miles of Reconstruction – 2-lane Undivided to 4-lane Divided (expandable to 6-lanes)
- Entirely within Hendry County
- Continues to carry the Divided 4-Lane Section from Lee County (to the west) into Collier County (to the east) making way towards SR 29
- **Construction Completed in Fall of 2016**



- ❖ **Segment 6; 430848-1; from Hendry/Collier C/L to Gator Slough Ln.; 4.0 Miles**
 - Currently in Design
 - 4.0 Miles of Reconstruction – 2-lane Undivided to 4-lane Divided (expandable to 6-lanes)
 - **Construction Letting Date of July 2023**
 - Continues to carry the Divided 4-Lane Section from Hendry County (to the west) into Collier County (to the east) making way towards SR 29



❖ **Segment 7; 430849-1; from Gator Slough Ln. to SR 29; 3.2 Miles**

- **Currently in construction w/ estimated completion date of Summer 2022**
- **3.2 Miles of Reconstruction – 2-lane Undivided to 4-lane Divided (expandable to 6-lanes)**
- **Continues to carry the Divided 4-Lane Section through Collier County (to the east) with connectivity to SR 29**
- **Multiple Components – Roundabout at SR 29, Concrete Sidewalk, 10-ft Asphalt Shared Use Path (along southside), Signing & Pavement Markings, Lighting, Landscaping**



- ❖ **Roundabout at Intersection of SR 82 and SR 29**
 - **Numerous Crashes at Existing Signalized T-Intersection**
 - **Proven Increased Safety and Traffic Flow**
 - **Modern Roundabout Design to Accommodate Trucks**

❖ **Current Status of SR 82 Corridor**

Segment 1

**Construction Completed October 2019
\$55M**

Segment 2

**Currently in Construction (est. completion July 2020)
\$30M**

Segments 3 & 4 (Let as one construction contract)

**Currently in Construction (est. completion July 2020)
\$43M**

Segment 5

**Construction Completed Fall of 2016
\$7M**

Segment 6

**Currently in Design
Letting to Construction in July 2023
\$36M Estimated Construction Cost**

Segment 7

**Currently in Construction (est. completion Summer 2022)
\$24M Estimated Construction Cost**

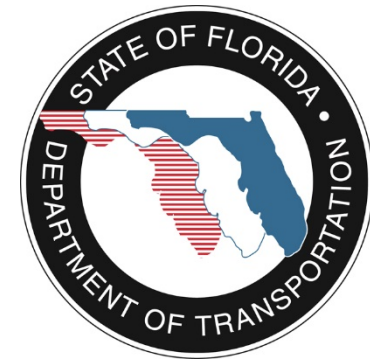


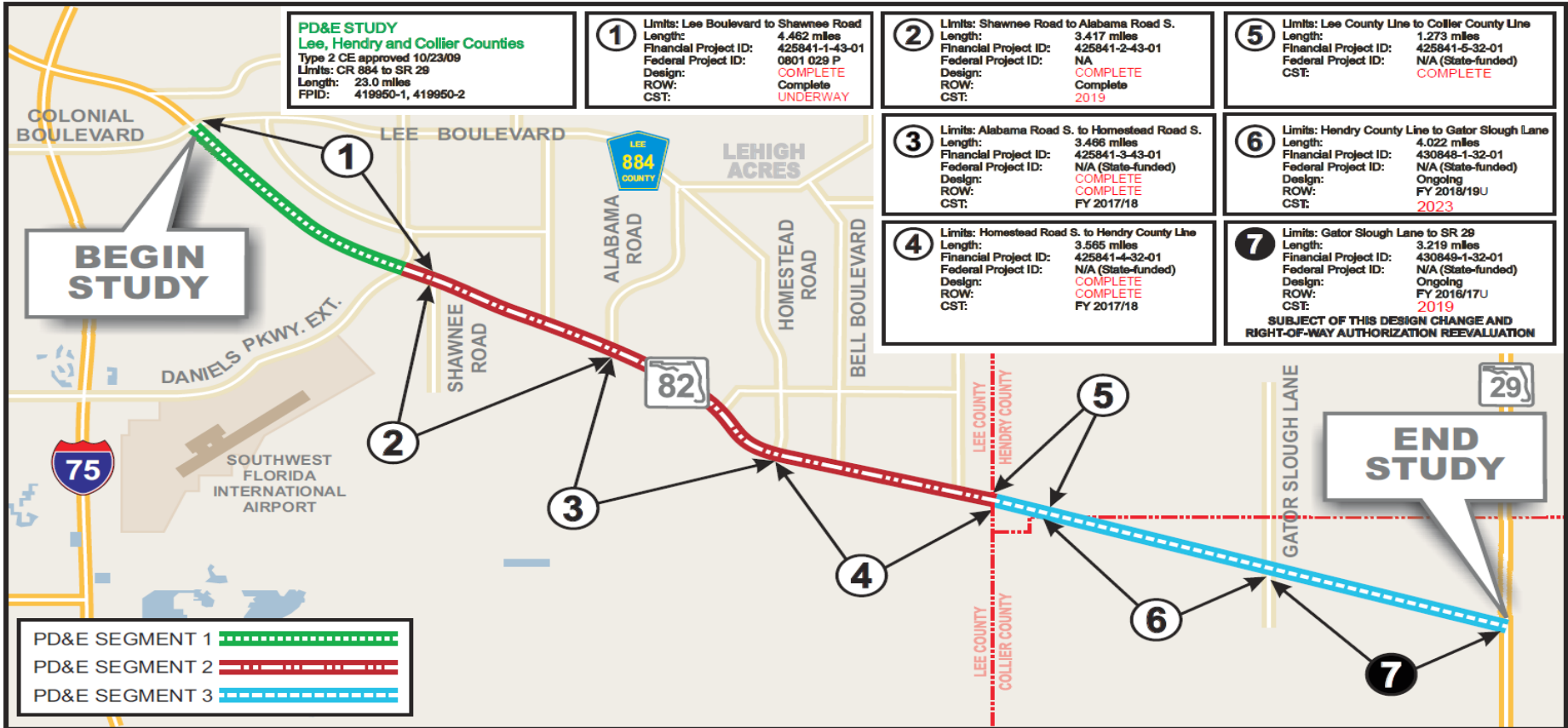
❖ **Conclusions.....**

- **Success through *Planning, Design and Construction Collaboration***

- **Overcome Challenges**
 - *Extensive Muck*
 - *Extreme Wet Construction Conditions*
 - *CFI Pioneering*
 - *MOT (for Muck Removal, CFI and Roundabout)*
 - *Embankment Need Satisfied Through Borrow Pit to Benefit LAMSID Water Management*

- **Benefits to ALL Involved**
 - *Local Municipalities*
 - *Public Users*
 - *Promotes Continued Economic Growth in This Vastly Growing South Florida Area*
 - *Wise and Efficient Use of FDOT (i.e. Taxpayers') Dollars*





❖ Questions??